

# Array

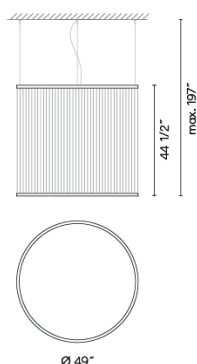
1840

Design By Umut Yamac

The Array pendant combines a series of fine technical filaments between two rings. The indirect light rises through the cylindrical form creating a color gradient.

VIBIA

## Spec sheet



**Optional: Extra cable length**  
Min. Quantity, upcharge and extra lead time apply

- Finish**
- 37 Terra Red  
NCS S 4040-Y70R
  - 47 Green L1  
NCS S 4005-G80Y
  - 24 Beige M1  
NCS S 2005-Y50R

**LED color temperature** 2700 K

**Dimming** 0-10V

**Installation type** Remote Micro / Surface

**Materials** Upper ring: Aluminum  
Bottom ring: Brass  
Diffuser: PC- Polycarbonate  
Threads: PES FR

**Light source** 1 x LED STRIP 76W 48V

**LED** CRI>90 9196 lm 121  
2700 K

**Driver** Constant Voltage 100~277 V V  
50~60 Hz HZ

Dimmable LED IP20 Multi-volt

50-60Hz 0-10V

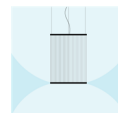
**Application** Pendants

**Packaging** 1 Box  
4.72 m x 53.15 m x 53.15 m  
Gross weight 50.66  
Net weight 28.63  
Vol. 7.7234

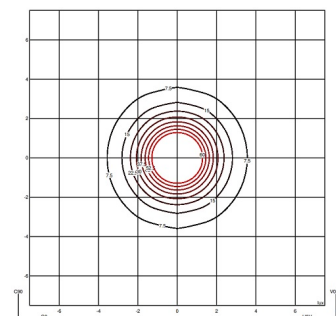
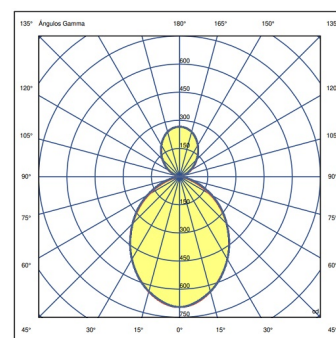
### Lighting effect

#### General lighting

Lamp for general lighting that equally distributes the light in all directions.

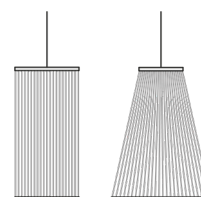


### Photometric Data



**Efficiency** 100%  
**Coordination System** CG  
**Total Flux** 2047 lm  
**Maximum Value** 695.34 cd

### Other Applications



VIBIA, INC.

**USA & CANADA**  
272 Fernwood Ave. Edison, NJ 08837. USA  
Phone 732 417 1700 sales@vibia.com www.vibia.com/us/usa

**HEADQUARTERS**  
Progrés 4-6. 08850 Gavà  
(Barcelona - Spain)